



CORPORATE PLANNER 2009



APPENDIX

#1 BREW CREEK ROAD • WHISTLER • BC • CANADA • VON 1B1
TEL: (604) 932-7210 • FAX: (604) 932-7223 • WWW.BREWCREEKLODGE.COM

BREW CREEK LODGE CORPORATE PLANNER

APPENDIX

SITE MAP & UNIT LAYOUTS

SITE MAP – GROUNDS

LAYOUT – DINING ROOM

LAYOUT – MEETING HOUSE

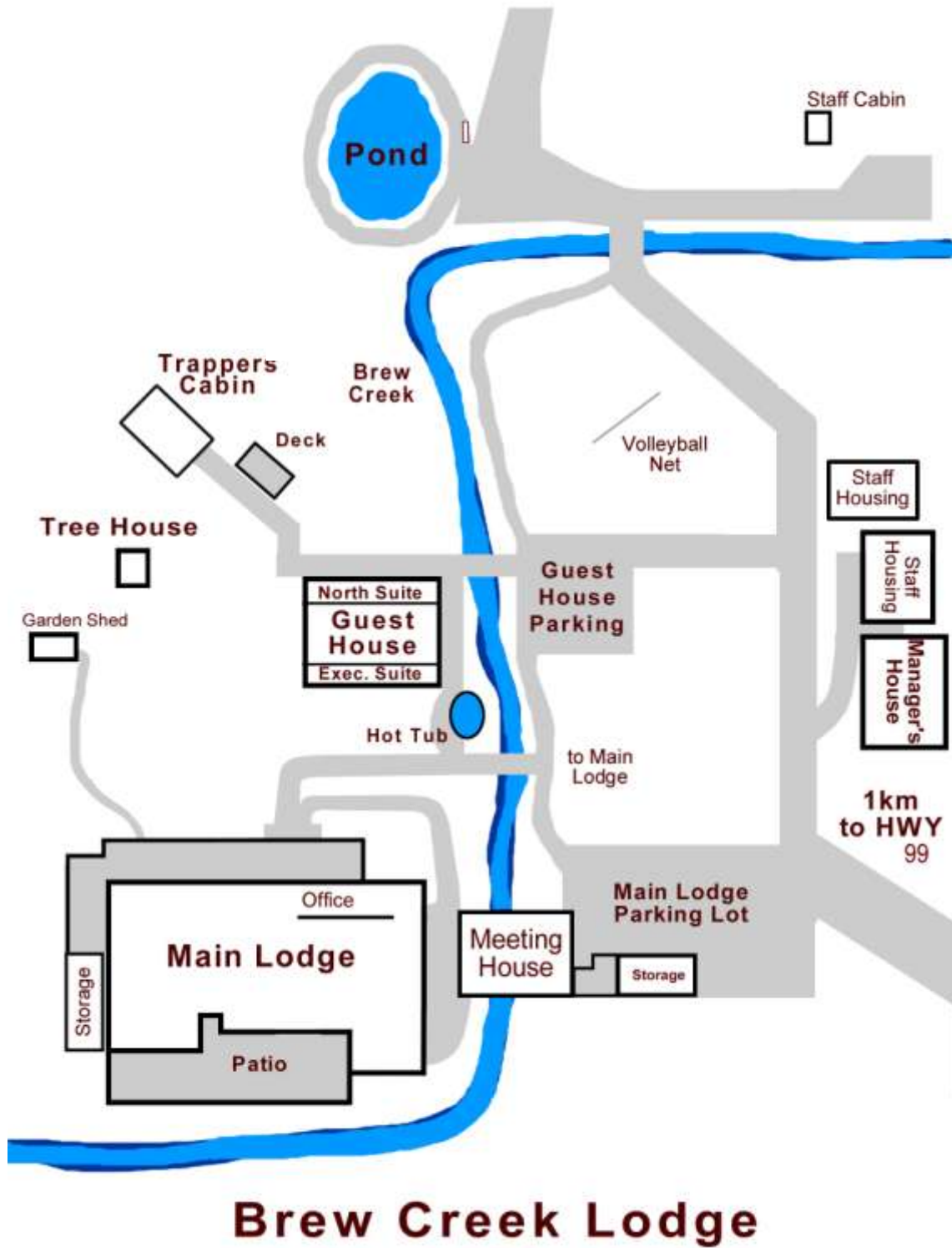
LAYOUT – MAIN LODGE

LAYOUT – GUEST HOUSE / EXECUTIVE SUITE / NORTH SUITE

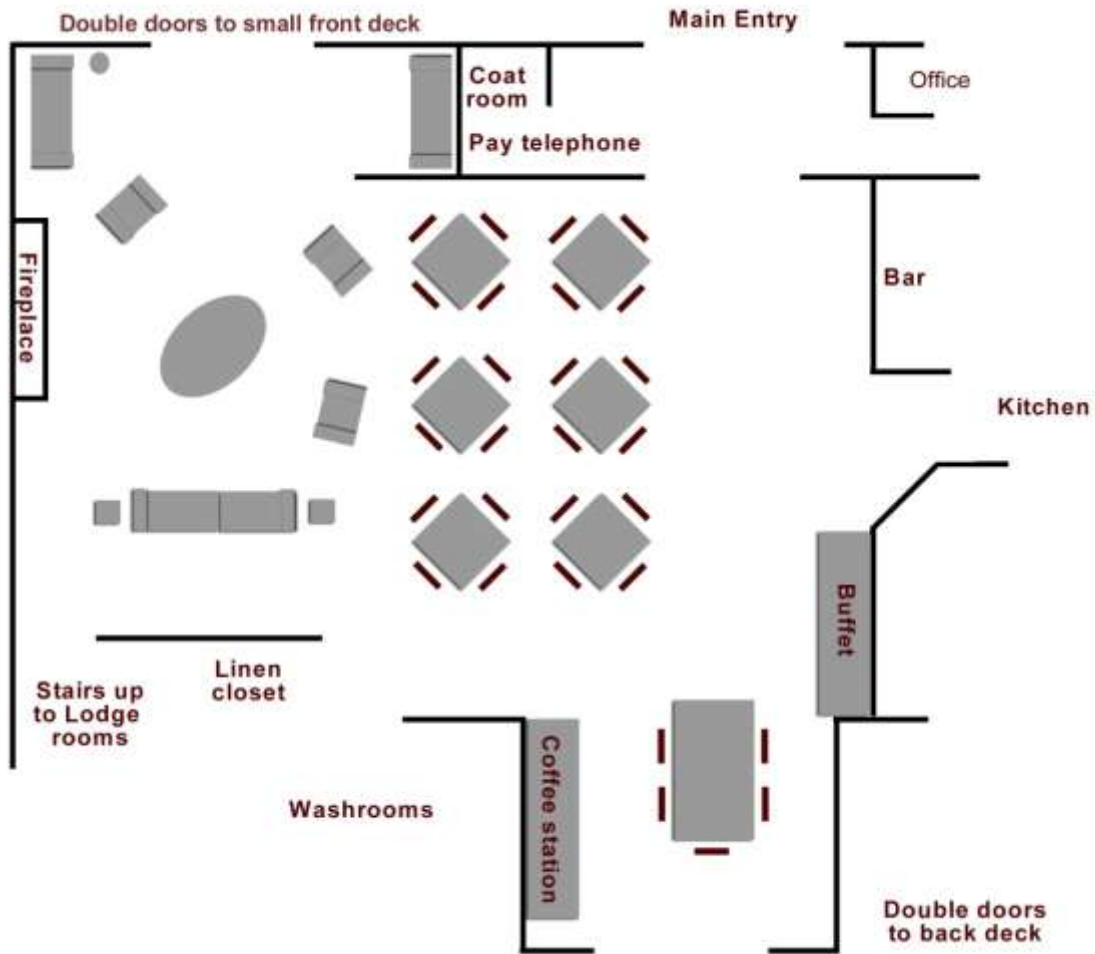
LAYOUT – TRAPPER'S CABIN

LAYOUT – TREE HOUSE

SITE MAP – GROUNDS

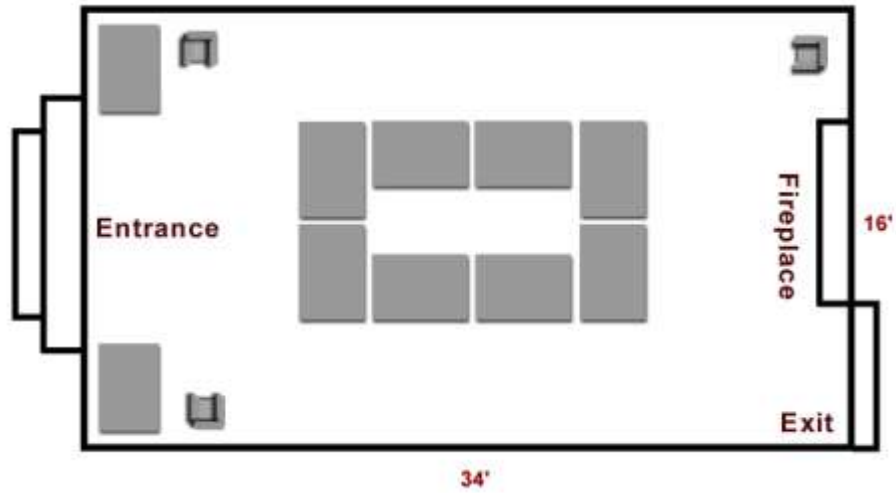


LAYOUT – DINING ROOM



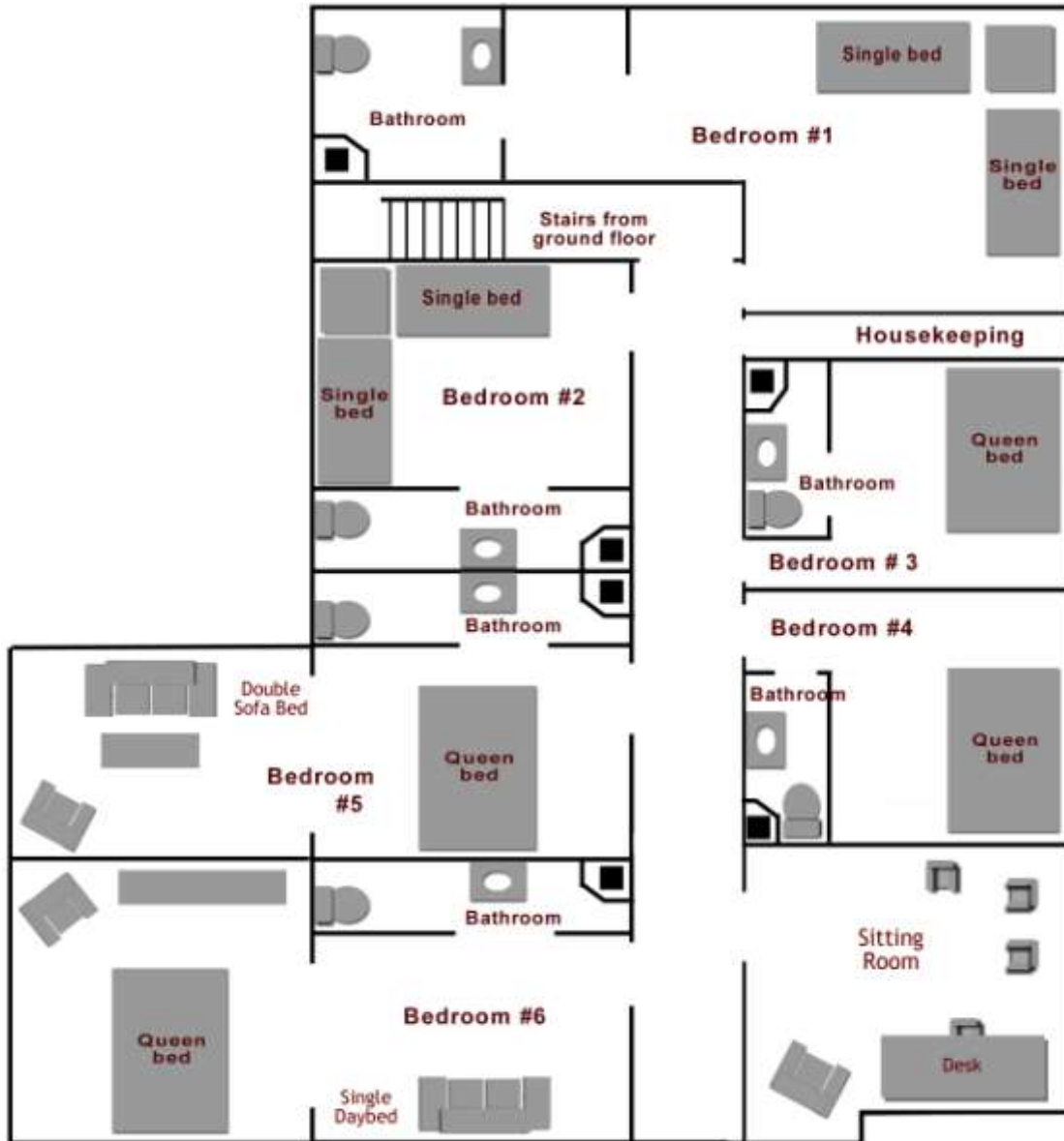
The Dining Room can be set up to handle groups of any size up to 70 people.

LAYOUT – MEETING HOUSE

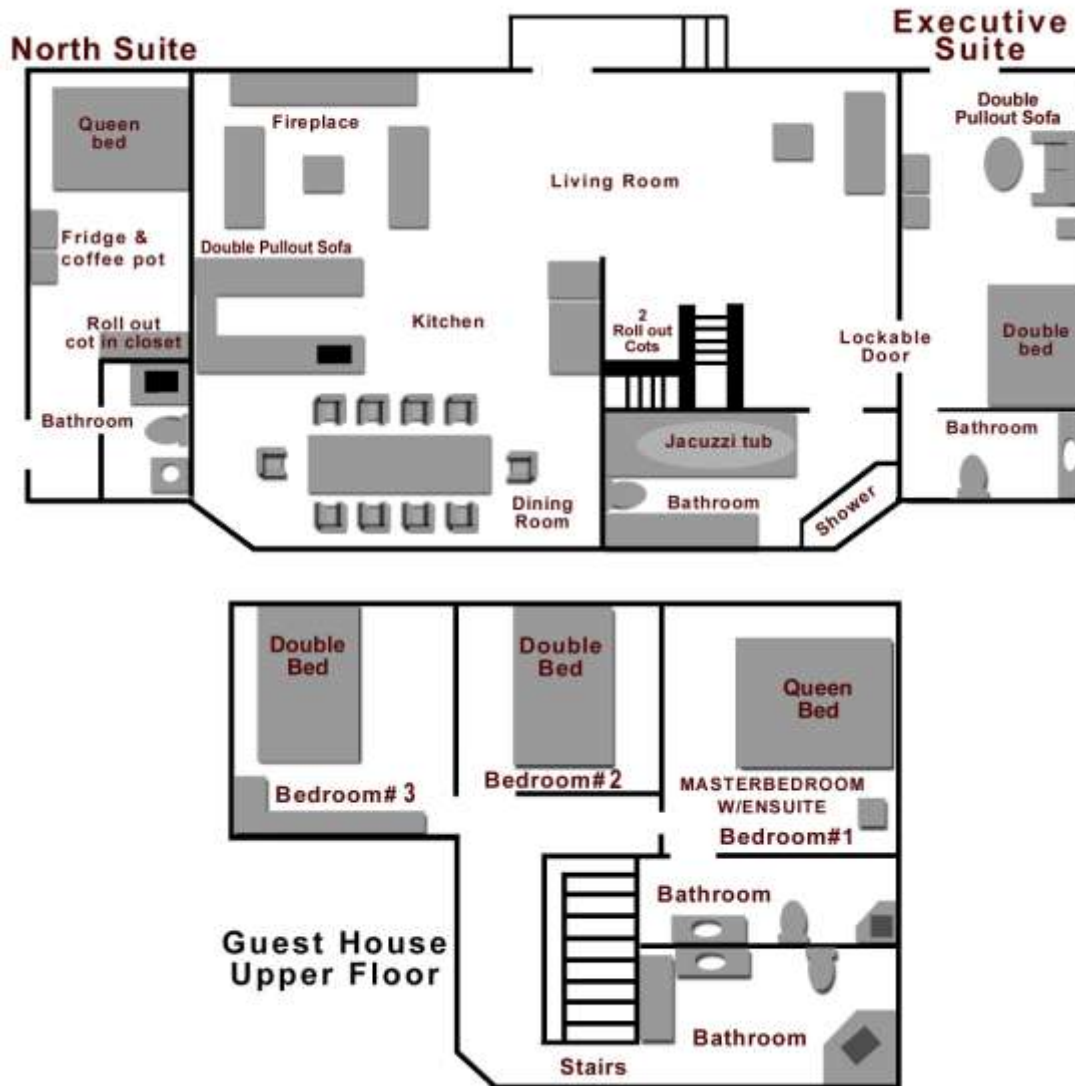


Board seating for 20-25 people max.
Classroom seating for 20-25 people max.
U-Shape seating for 20 people max.
Theatre seating for 50 people max.

LAYOUT – MAIN LODGE



LAYOUT – GUEST HOUSE



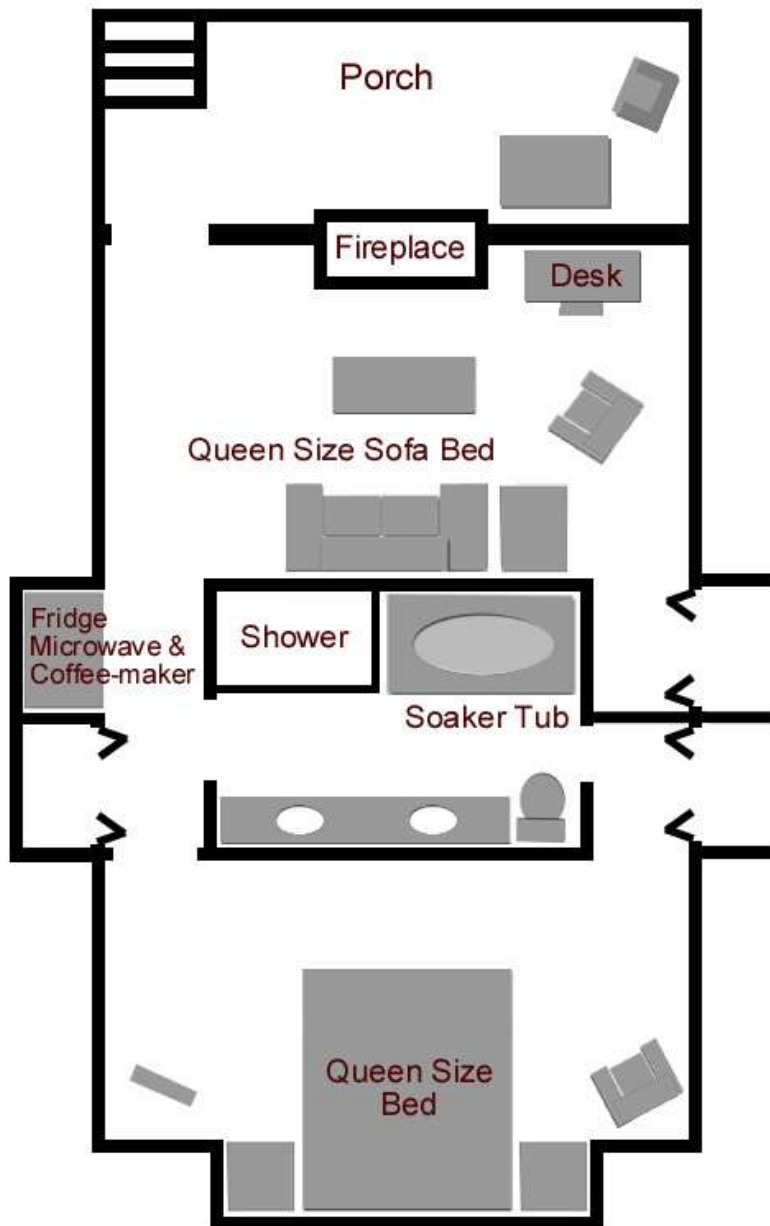
The Guest House is fully self-contained & accommodates 3 guests privately, or 4 guests at our shared room/bath rate. The house sleeps a maximum of 10 people where bed-sharing is appropriate, using 3 separate bedrooms plus 1 double sofa bed & 2 cots in the common area of the living room.

The Executive Suite accommodates 1 guest privately, or 2 guests at our shared room/bath rate. This suite sleeps a maximum of 4 where bed-sharing is appropriate, using 1 double bed & 1 double sofa bed.
(Private entry & adjoining entry to Guest House)

The North Suite accommodates 1 guest privately. This suite sleeps a maximum of 3 guests where bed-sharing is appropriate, using 1 queen bed & 1 roll-out cot.

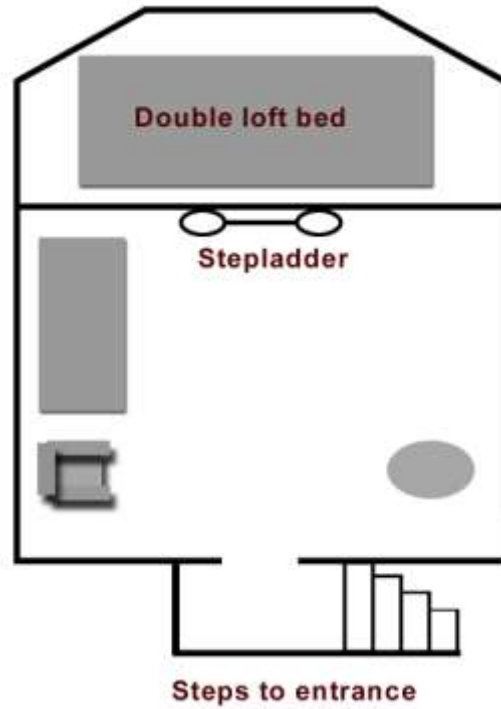
The complete building has 5 private bedrooms/bathrooms and sleeps a maximum of 17 guests.
All accommodations are non-smoking.

LAYOUT – TRAPPER’S CABIN



This deluxe cabin can accommodate up to four people.
Cooking is not permitted in the cottage
but a coffee maker, microwave and small refrigerator are available for use.

LAYOUT – TREE HOUSE



This funky little building has no bathroom.
Guests sleeping in Tree House share
the Trapper's Cabin or Guest House bathroom facilities.