



Wedding Planner 2009

Appendix

#1 Brew Creek Road • Whistler • British Columbia • Canada • V0N 1B1
Tel: (604) 932-7210 • Fax: (604) 932-7223 • www.brewcreeklodge.com

Brew Creek Lodge Wedding Planner Appendix

~ Site Map & Unit Layouts ~

Site Map - Grounds

Layout - Banquet Hall

Layout - Chapel

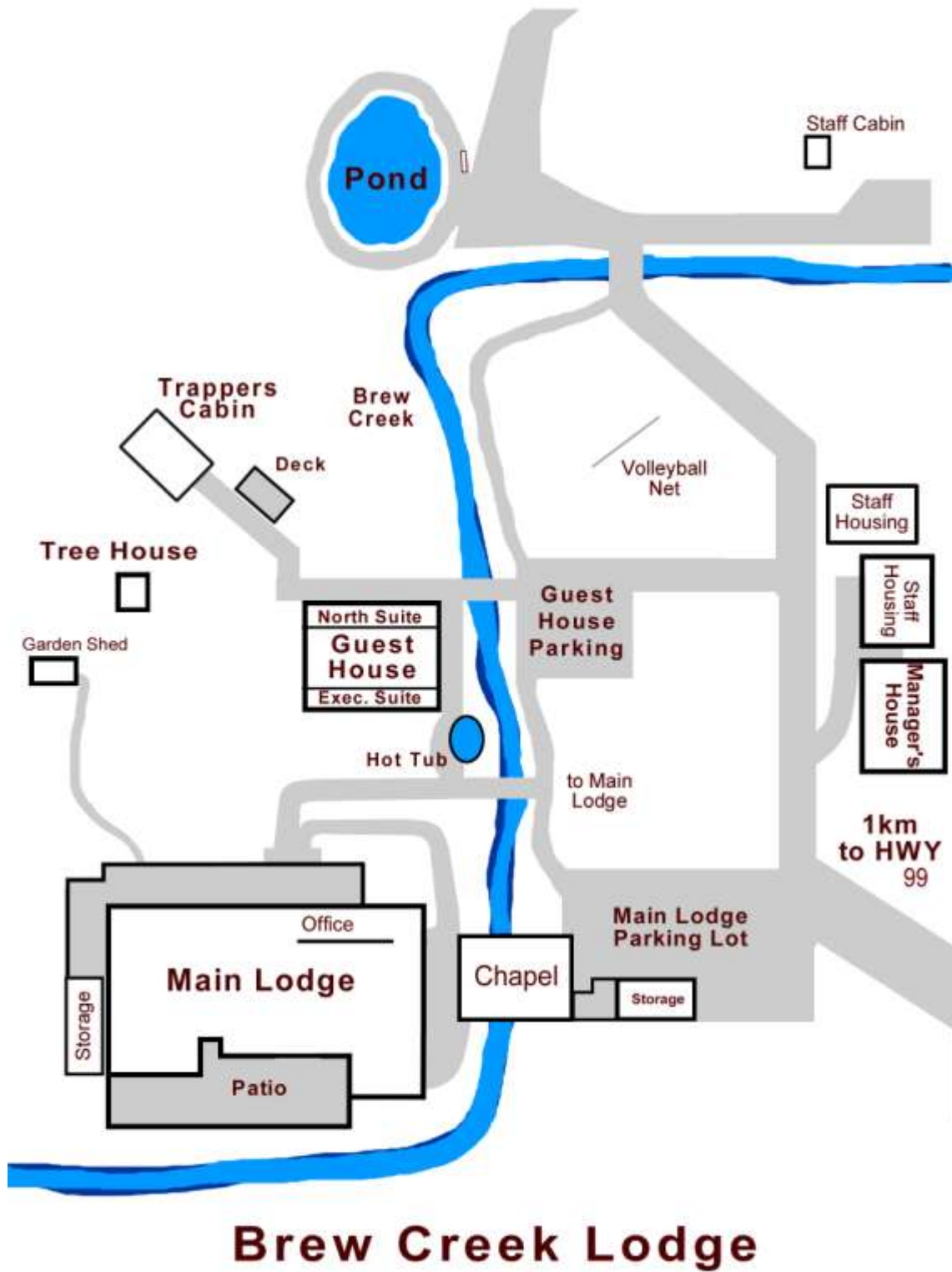
Layout - Main Lodge

Layout - Guest House / Executive Suite / North Suite

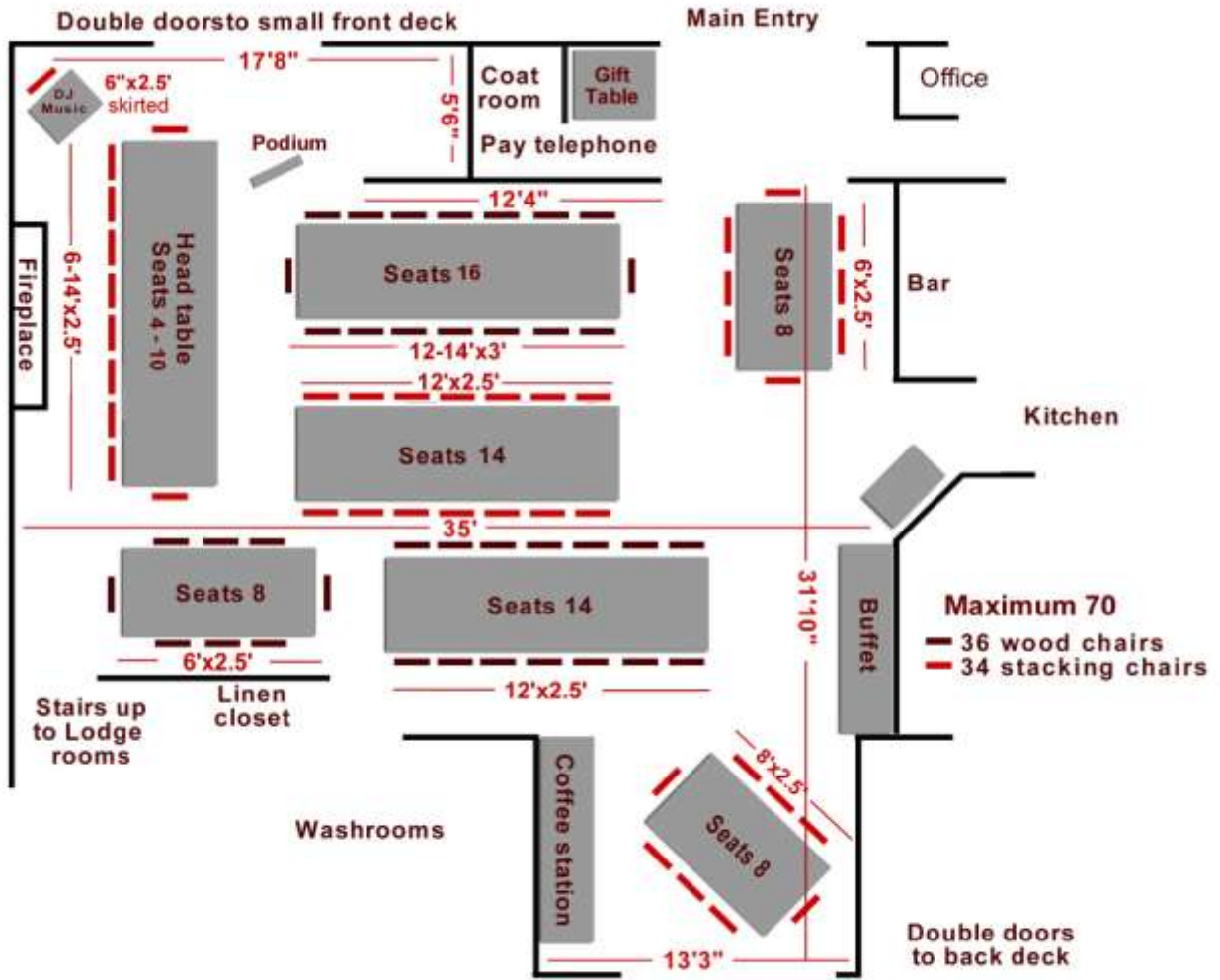
Layout - Trapper's Cabin

Layout - Tree House

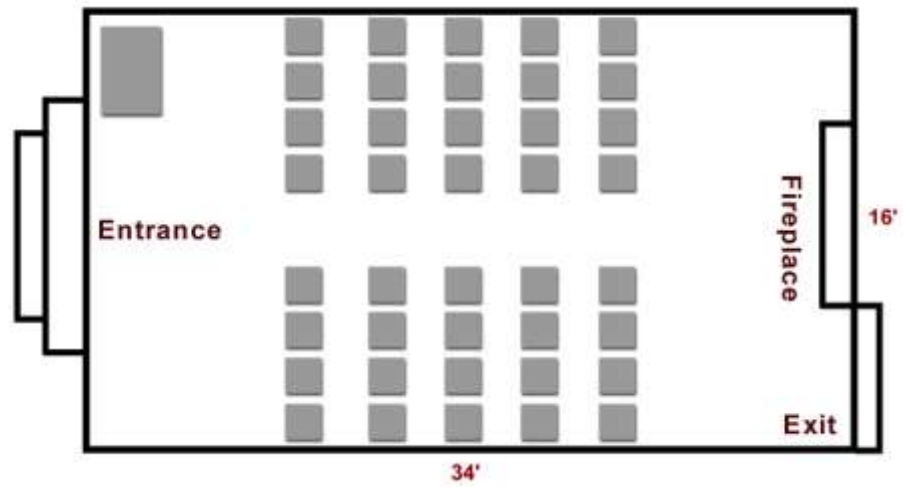
Site Map - Grounds



Layout - Banquet Hall

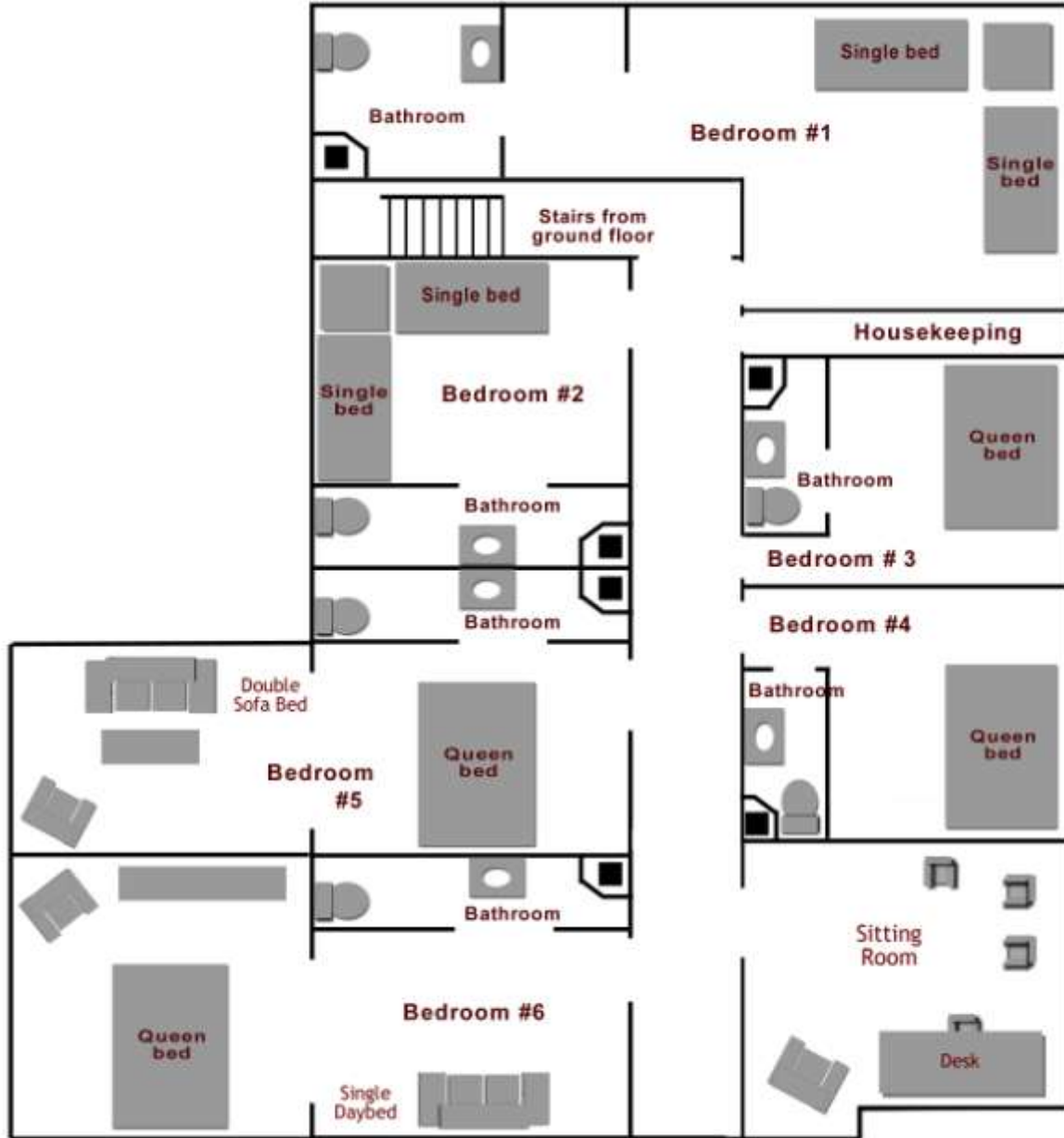


Layout - Chapel

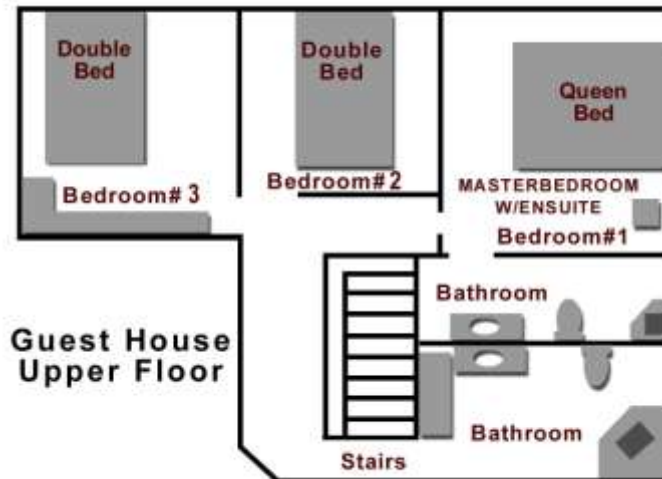
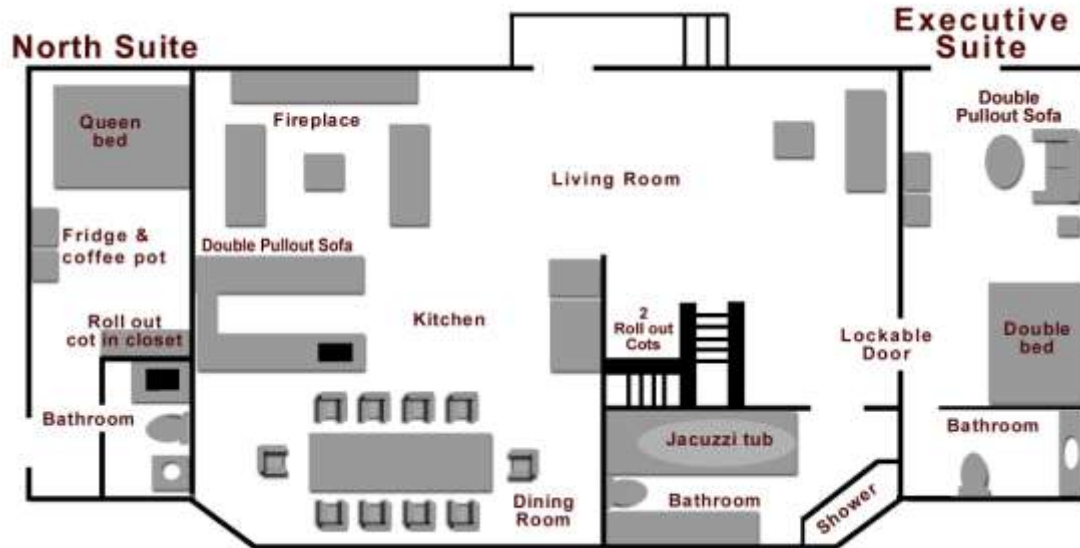


The Chapel can accommodate up to 56 chairs (maximum) with additional standing room at the front and rear.

Layout - Main Lodge



Layout - Guest House



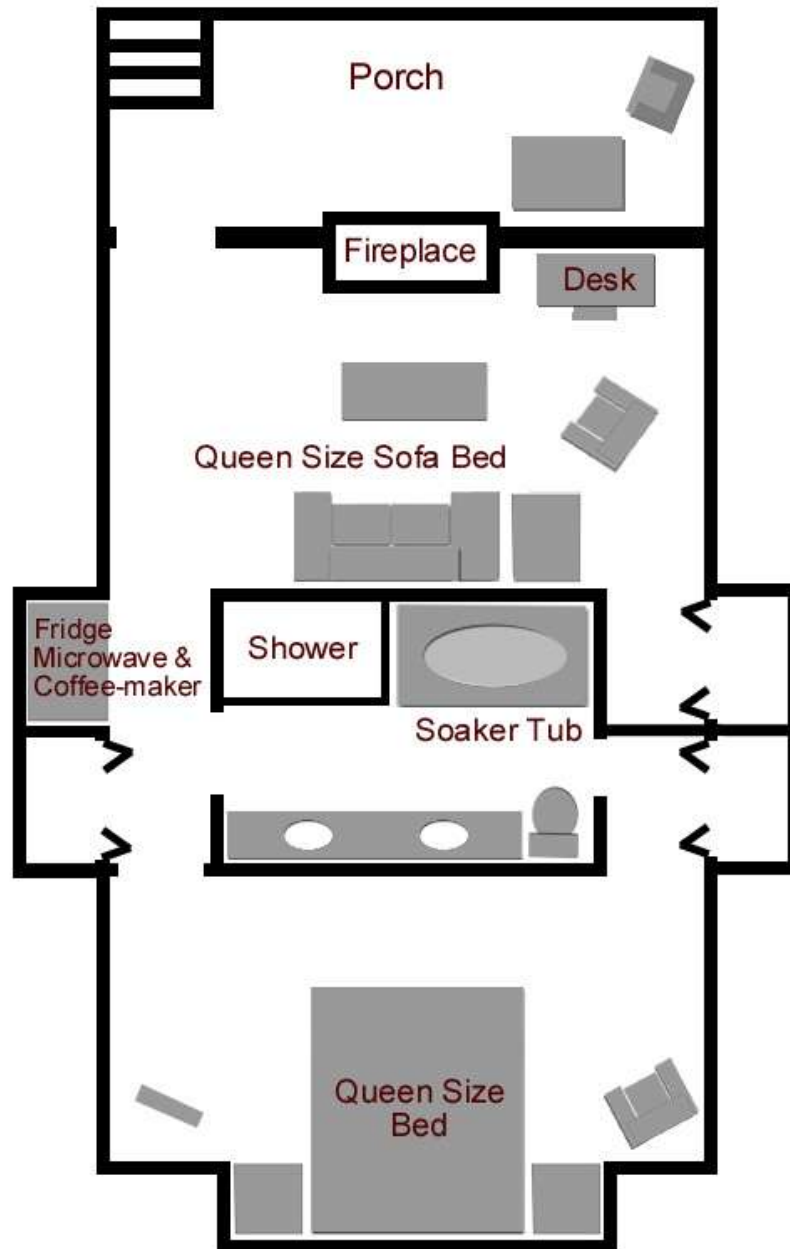
The Guest House is fully self-contained & accommodates 3 guests privately, or 4 guests at our shared room/bath rate. The house sleeps a maximum of 10 people where bed-sharing is appropriate, using 3 separate bedrooms plus 1 double sofa bed & 2 cots in the common area of the living room.

The Executive Suite accommodates 1 guest privately, or 2 guests at our shared room/bath rate. This suite sleeps a maximum of 4 where bed-sharing is appropriate, using 1 double bed & 1 double sofa bed.
(Private entry & adjoining entry to Guest House)

The North Suite accommodates 1 guest privately. This suite sleeps a maximum of 3 guests where bed-sharing is appropriate, using 1 queen bed & 1 roll-out cot.

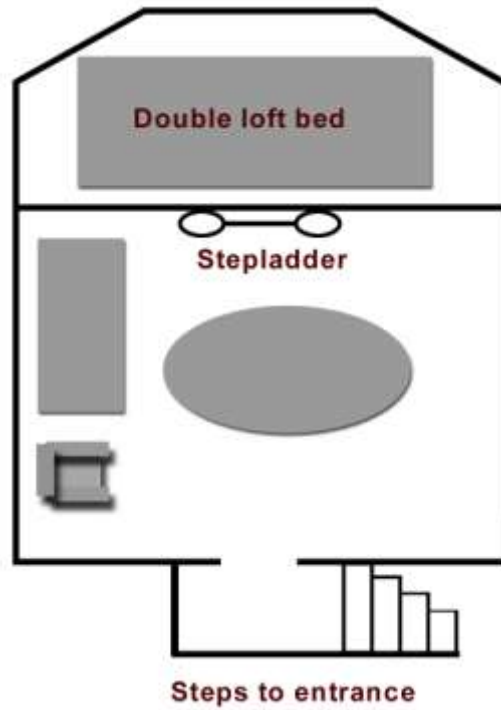
The complete building has 5 private bedrooms/bathrooms and sleeps a maximum of 17 guests.
All accommodations are non-smoking.

Layout - Trapper's Cabin



This deluxe cabin can accommodate up to four people.
A coffee maker, microwave and small refrigerator are available for use.

Layout - Tree House



This funky little building has no bathroom.
Guests sleeping in Tree House share
the Trapper's Cabin or Guest House bathroom facilities.